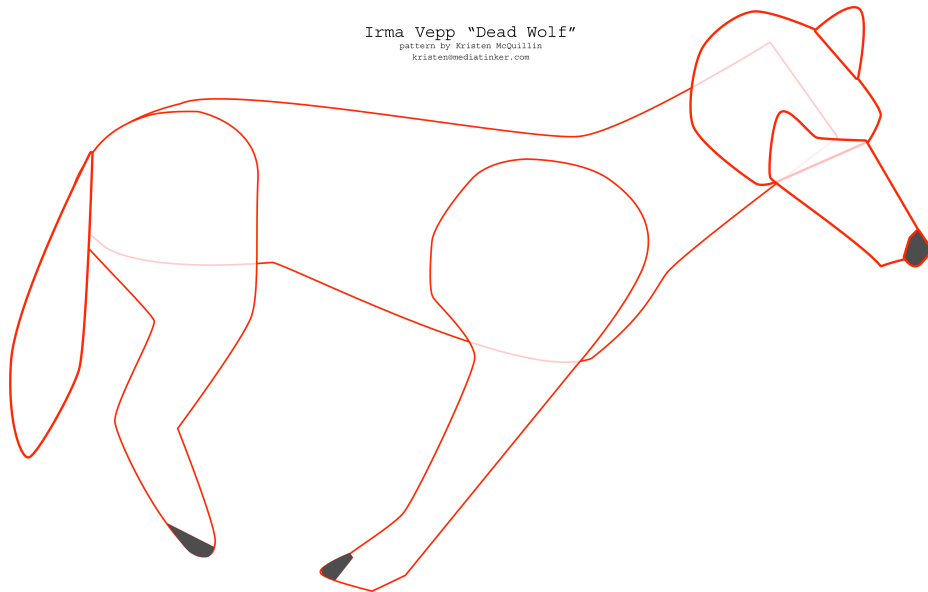


Irma Vepp "Dead Wolf"  
pattern by Kristen McQuillin  
kristenmediatinker.com



## IRMA VEPP "Dead Wolf" Pattern

*Makes 1 full size Dead Wolf*

---

### Construction Notes

---

Dear Sewer:

I'm really sorry that I haven't tested this pattern myself. You will have to do some jiggling and improvisation to make things fit, because that's how I usually work when I'm building something for the first time. I draft a rough pattern (like this one) then start sewing – doing a lot of basting, ripping and re-sewing as I go. Don't hesitate to toss it all away and start fresh if things don't go right.

#### *Weight and Rigidity*

The dead wolf needs to be weighted and stiffened. A real wolf weighs about 80 pounds; that's probably a bit much for a stage prop, so we'll keep it to 15-25 pounds in head, shoulders and hips. In our wolf, rigor mortis hasn't completely set in yet. Instructions for weights and stiffening follow.

#### *Pattern Notes*

The finished size of the wolf is about a 36 inches long by perhaps 45 inches tall at the head. Just about life-size. The pattern file is made to print full-size – about 42 pages that you will have to fit together. It's arranged as a cutting diagram suitable for 45" wide fabric with a nap running left to right. Better buy a lot of stuffing and about 4 yards of long fake fur in grey or beige.

**The pattern does not include seam allowances.**

The foot pads and nose (indicated in grey on the pattern pieces) are not included in the pattern. Cut them of leatherette and sew them as you like.

Regards,

Kristen McQuillin  
kristen@mediatinker.com  
Tokyo, Japan  
July 24, 2006

---

## Weights

---

Make five circular muslin bags that will hold 3 – 5 lbs of rice, beans or sawdust. One bag will be used for the head; two for the hips and two for the shoulders.

---

## Spine

---

Create a length of interlocking plastic cups about 50 inches long (measure the pattern from tail to neck opening for a more accurate number). Drill a hole in the bottom of each cup, and string the cups together, leaving a long length of string at each end for attaching the spine to the body. Wrap the spine in batting to keep the cup edges from indenting the fabric of the body.

---

## Leg Stiffening

---

Measure the pattern, and cut 1/2" dowel rods to the right length. Duct tape them together to form four legs with the leg angles indicated on the pattern.

---

## Tail

---

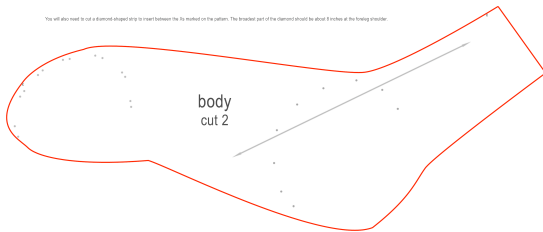


Sew the three tail pieces together, leaving top open. Turn right side out. Release hair from seams. Stuff.

---

## Body

---



Sew the diamond shape gusset (cut as instructed on pattern piece) along top of neck, shoulder & hip to crest of buttock between both sides of the body.

Pin tail into place, at point where diamond ends. Leave sufficient amount of tail inside as a tying-off point for the spine. Baste into place.

off point for the spine. Baste into place.

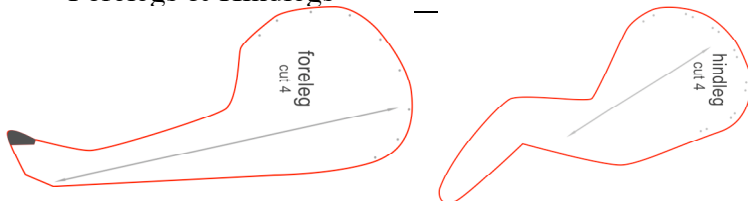
Sew from tail along bottom to belly, stopping where the angle of the lower abdomen begins. Sew lower neck line to about 18 inches from other sew line - leaving big opening at neck & belly. Turn right side out.

Slide spine stiffening into place through the holes, using string end to tie into place at tail. The other end of the stiffening should exit the neck. Stuff the body firmly. Sew openings shut.

---

## Forelegs & Hindlegs

---



Leaving a generous opening along the top curve, sew along length of leg, foot and back of leg. Turn right side out.

Stuff foot. Insert dowel rod stiffeners, stuff firmly around rods. Place weight bag into hip area, Stuff as needed. Sew top closed. Repeat for remaining legs.

Securely handstitch legs to body along points marked with dots.

---

## Foot Pads

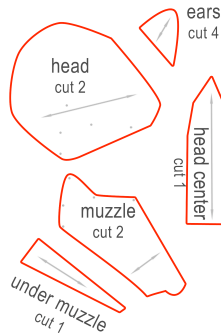
---

If desired, cut leatherette for foot pads. Hand stitch into place as indicated on pattern.

---

## Head

---



Baste a 1/2" fold into the center bottom of two of the ear pieces. This forms the concave interior portion of the ear. Sew one folded and one flat piece together along the top curve. Turn right side out. Repeat for second ear.

Pin ear to point marked E. The concave "inner ear" should face outside of wolf.

Sew head center to both sides of head from point marked A, catching in ears. Sew along back curve of head, leaving neck open. Turn right side out.

Sew under-muzzle to muzzle pieces between points marked M. Join muzzle along nose and top of muzzle to point S. Turn inside out. Stuff firmly. Handsew securely to head, adjusting stuffing along jawline. (M to S)

---

## Nose, Eyes & Mouth

---

If desired, fashion a leatherette nose from a rounded triangle for the front end of the nose, and a shape similar to the marks on the pattern. Stuff lightly and attached in place indicated.

Eyes & mouth could be made of ribbon or trim a darker shade than the fur. Or embroider them on. Place as noted on the ear & muzzle patterns.

---

## Attaching Head to Neck

---

Tie spine to head weight bag. Stuff top of head and position head so that the spine and weight bag are about centered in the head. Stuff firmly around weight and neck. Handstitch bottom edge of head onto neck.

---

## Finishing

---

Brush the fur in the right direction, paying attention to loosen the fur from seams. Give the wolf a haircut with hair clippers to trim it to length around the legs, belly, and muzzle. You could add some brindling with spraypaint. Try making the belly lighter and adding some dark edges along the "bones" of the legs.